

Investigation of Mechanical Properties of CFRP/EVA Laminated Composites According to Tensile and Flexure Test

SUN-HO GO¹, SEONG-MIN YUN¹, MIN-SANG LEE¹, JANG-HO LEE³,
LEE-KU KWAC⁴, #HONG-GUN KIM⁴

¹Graduate School, Department of Mechanical Engineering, Jeonju University, KOREA

²Department of Mechanical and Fusion System Engineering, Gunsan National University, KOREA

³Department of Mechanical and Automotive Engineering, Jeonju University, KOREA

hkim@jj.ac.kr

Abstract: Carbon fiber reinforced Plastics (CFRP) composite materials have excellent mechanical characteristics such as specific strength, specific stiffness, and corrosion resistance. However, the greatest disadvantage for the application of CFRP is its weakness to impact. When CFRP is applied to members of structures that require safety of people such as airplanes and automobiles, they can receive impact damage by colliding with various types of materials such as small stones or fragments. The mechanical strength can be improved by polymer lamination during molding to enhance the impact strength and flexibility of the brittle carbon-fiber composite materials. Hence, the mechanical strength was analyzed by varying the lamination method and the lamination ratios of CFRP and ethylene vinyl acetate(EVA). In this study, tensile test was performed according to the test specifications and method specified in the ASTM standard at different lamination ratio and method of CFRP and EVA (Ethylene Vinyl Acetate) sheets. That shows excellent characteristics in the flexibility of crack resistance to analyze the mechanical characteristics of the CFRP/EVA hybrid material and the existence of defects in the combination between CFRP and EVA. Tensile tests and 3-point bending tests were performed to determine the mechanical strength.

Key-Words: Carbon Fiber Reinforced Plastics, Ethylene Vinyl Acetate, Tensile test, Scanning Electron Microscope, Toughness, Elasticity Modulus

1 Introduction

The rapid evolution of a highly specialized industrial society of late has necessitated the development and application of new materials. Among the researches on new materials, studies on carbon composite materials have been actively pursued. Carbon fiber reinforced plastics (CFRP) composite material is more advantageous than the metal alloy as it can reduce the weight by 20~50%[1]. It also exhibits excellent mechanical properties, such as specific strength, specific stiffness, and corrosion resistance. The most important factors that determine the characteristics of the carbon fiber reinforced plastics are impact damage, failure, absorbed energy, fiber-based fracture since they are vulnerable to damage by foreign body impact[2]. The damage due to the impact of the foreign body occurs easily due to the lamination characteristics of the CFRP. In addition, delamination occurs when a compressive load is applied to the area damaged by the foreign body impact[3]. As local buckling occurs, the detachment becomes more severe through unstable propagation, resulting in total destruction [4]. Since the brittle

carbon fiber reinforced plastics are damaged by the impact, their repair and maintenance are difficult. This limits the applications of CFRP for the structures involving lot of impacts.

The mechanical strength can be improved by polymer lamination during molding to enhance the low impact strength and flexibility of the brittle carbon-fiber composite materials. Hence, the mechanical strength was analyzed by varying the lamination method and the lamination ratios of CFRP and ethylene vinyl acetate(EVA). The mechanical strength was analyzed by a tensile test and a 3-point bending test. The preparation of the specimens and the experiments were conducted according to ASTM D 5083 and D 3039 for the tensile test and ASTM D 790 for the 3-point bending test.

2 Test Methods

In this study, the tensile test and the 3-point bending test were performed to analyze the mechanical properties of the hybrid laminated composites prepared according to the lamination method and the mixing ratio of the lightweight material, CFRP prepreg (3K), and Ethylene Vinyl Acetate polymer.

The woven fabric carbon fiber prepreg, WSN-3K, from SK Chemical was used as the CFRP composite, while HI-EVA(HEV6F) from Hwaseung Industries Co., Ltd. was used as the EVA sheet.

Five types of specimens were prepared by varying the mixing ratio of CFRP and EVA. Type1 is referred to CFRP-24ply, Type2 is CFRP-20ply EVA-2ply, Type3 is CFRP-16ply EVA-4ply, Type4 is CFRP-12ply EVA-6ply, and Type5 is CFRP-8ply EVA-8ply. Subsequently, the five specimens were produced by dividing CFRP based on EVA lamination method. The schematic diagrams of the five specimen types according to the mixing ratios and the lamination methods are shown in Table 1. The physical properties of Prepreg(3K), and EVA with VA content of 33%, procured from the different companies are presented in Table 2 and 3, respectively.

Table 1 Several Types of Laminating Method






Type	Lamination method
1	 CFRP ₂₄
2	 CFRP ₇ +EVA ₁ +CFRP ₆ +EVA ₁ +CFRP ₇
3	 CFRP ₃ +EVA ₁ +CFRP ₃ +EVA ₁ +CFRP ₄ +EVA ₁ +CFRP ₃ +EVA ₁ +CFRP ₃
4	 CFRP ₃ +EVA ₂ +CFRP ₃ +EVA ₂ +CFRP ₃ +EVA ₂ +CFRP ₃
5	 CFRP ₂ +EVA ₂ +CFRP ₁ +EVA ₂ +CFRP ₂ +EVA ₂ +CFRP ₁ +EVA ₂ +CFRP ₂

Table 2 Composition of WSN 3K [5]

Thickness (mm)	Fiber Areal Wt	Resin Content (%)	Total Wt
0.227	240	41	336
Tensile Strength	Tensile Modulus	Fiber Density	Resin Density
450		1.77	1.2

Table 3 Composition of EVA [6]

VA content (%)	Specific gravity	Tensile strength	Elongation (%)
33	0.96	85	800
Tensile modulus	Hardness	Softening point (Vicat) °C	Thickness (mm)
900	60	Below 40	0.45

2.1 Tensile Test

The dimensions of the specimens and the experimental methods of the tensile test were based on ASTM D 5083 [7] and ASTM D 3039[8] standards. The test was conducted using 3 specimens of each type. Fig. 1 show the dimensions of the specimen.

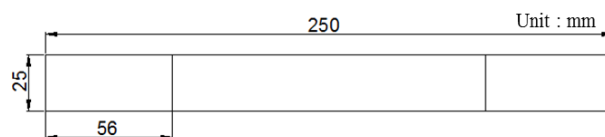


Fig. 1 Tensile Specimen

2.2 3-Point Bending Test

The 3-point bending test was conducted to evaluate the mixing characteristics of tension and compression depending on the lamination ratios of CFRP and EVA. The bending test was performed using the specimen dimension, testing method and conditions based on ASTM D 790[9]. Similar to the tensile test, the bending test was performed using 3 specimens of each type. Fig. 3 show the dimensions of the specimen used for the bending test.

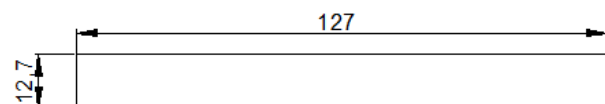


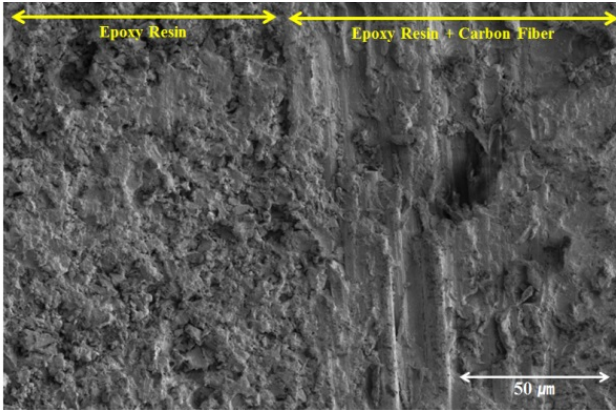
Fig. 2 3-Point Bending Specimen

3 Results and Discussion

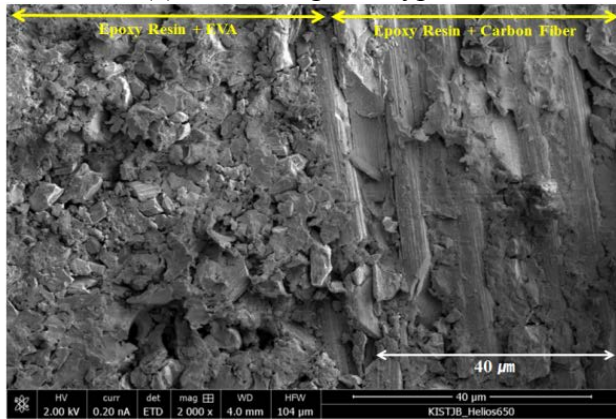
3.1 Scanning Electron Microscope

Before evaluating mechanical properties, five types of laminated CFRP and EVA sheets were tested for interfacial properties and defects such as pores using a scanning electron microscope (SEM). Figure 2(a) shows the laminated type of pure CFRP. It is seen that the section that holds much epoxy resin and the section that holds carbon fibers combined with epoxy resin are separated by the interface in the middle and that these two sections are closely combined without any defect. Figure 2(b)-Figure 2(e) show the SEM images of the types that have CFRP with increased lamination of EVA sheets. The section that holds epoxy resin combined with much EVA and the section that holds carbon fiber

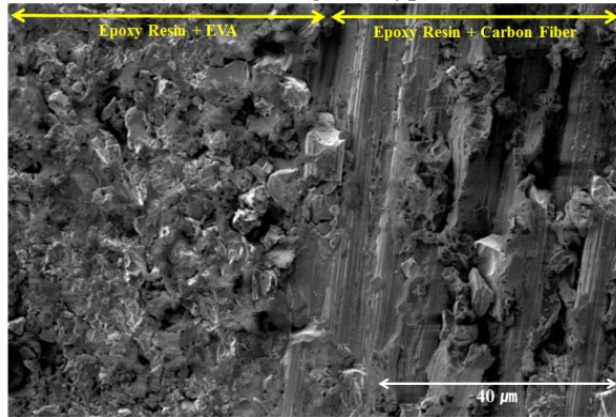
combined with epoxy resin are separated in the same way by the middle section. It is seen that epoxy resin and EVA are closely combined without any defect.



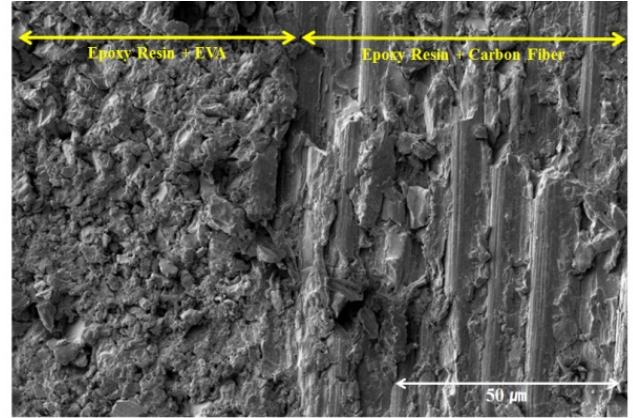
(a) SEM Image of Type 1



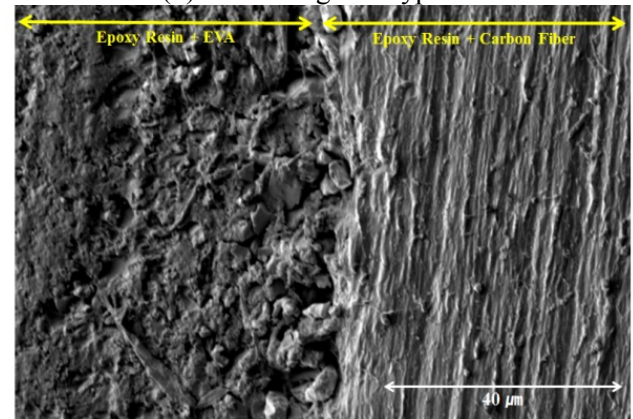
(b) SEM Image of Type 2



(c) SEM Image of Type 3



(d) SEM Image of Type 4



(e) SEM Image of Type 5

Fig. 2 SEM Image of Five Types

3.2 Results of Tensile Test

In the tensile test, the five specimen types prepared by varying the lamination method and the ratios of CFRP and EVA were tested 3 times to determine the tensile strength and the strain. In addition, the average values of the tensile strength and the strain from the different specimens were compared. The results of the tensile tests from the five specimen types are summarized in Fig. 3~7 and Table 4.

The result of the tensile test for Type 1 comprising 24ply pure CFRP laminations is shown in Figure 3. Type 1 exhibited the best result among the 5 Types with an ultimate tensile strength of 811.11 MPa, a tensile modulus of 39.55 GPa, and a strain at break value of approximately 2.26 %.

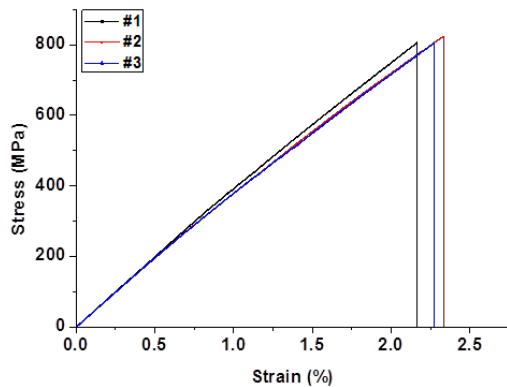


Fig. 3 Result of Type 1

Fig. 4 shows the result of the tensile test for Type 2 consisting of 2plyEVA laminations with each 1ply between CFRP 3K 20ply. The average ultimate tensile strength was 619.98 MPa, the tensile modulus was 28.13 GPa, and the strain at break was approximately 2.50%. The ultimate tensile strength of Type 2 decreased by about 20%, while the elastic modulus decreased by about 29% when compared to those of Type 1. However, the strain at break increased by about 114% compared to that of Type 1. This might be due to the presence of EVA lamination with high flexibility.

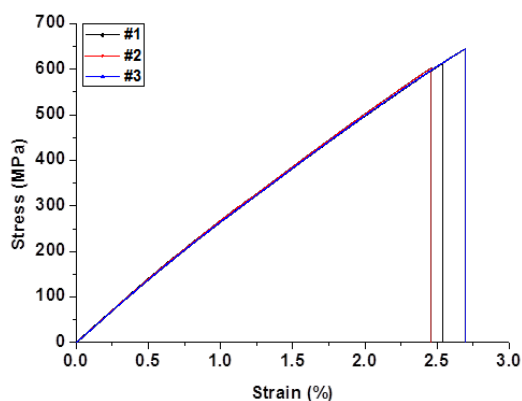


Fig. 4 Result of Type 2

Fig. 5 shows the result of the tensile test for type 3, in which 4ply of EVA was uniformly laminated individually between CFRP 3K 16ply. Unlike type 1 and type 2, the strain-stress curve of type 3 increased linearly and then the first and second ruptures were observed. Thus, the strain and the stress were confirmed from the first and the second results. The ultimate tensile strength at the first rupture was 327.81 MPa, while it was 315.05 MPa at the second total rupture. The strain at the first max. stress was approximately 1.82%, while the second strain at total rupture was about 3.15%. The tensile modulus of Type 3 was found to be 21.37 GPa. The tensile strength of Type 3 in the first rupture decreased by 59% compared to that of Type

1. Meanwhile, 60% reduction was observed in the second rupture. The strain reduction in the first rupture was about 20%, while it increased to 143% in the second rupture. The elastic modulus was reduced by about 45%. The reduction of the ultimate tensile strength by 5.5%, from 327.81 MPa in the first rupture to 312.05 MPa in the second rupture was observed for Type 3.

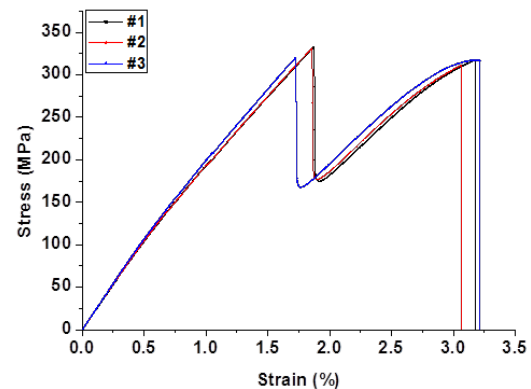


Fig. 5 Result of Type 3

Fig. 6 shows the result of the tensile test for Type 4, in which each 2ply of 6 ply EVA was uniformly laminated between CFRP 3K 12ply. Similar to Type 3, second rupture occurred in Type 4. The ultimate tensile strength at the first rupture was 308.34 MPa, while the tensile strength at the second total rupture was 263.37 MPa. The strain at the first Max. Stress was approximately 1.87%, while the second strain at total rupture was about 3.93%. The tensile modulus of Type 4 was found to be 19.42 GPa. The tensile strength of Type 4 at the first rupture decreased by 60% when compared to that of Type 1. Meanwhile, 65% reduction was observed at the second rupture. The strain was decreased by 15% at the first rupture and increased to 174% at the second rupture. The elastic modulus was reduced by about 50%. For Type 4, the tensile strength at the second rupture was approximately 85% of that at the first rupture.

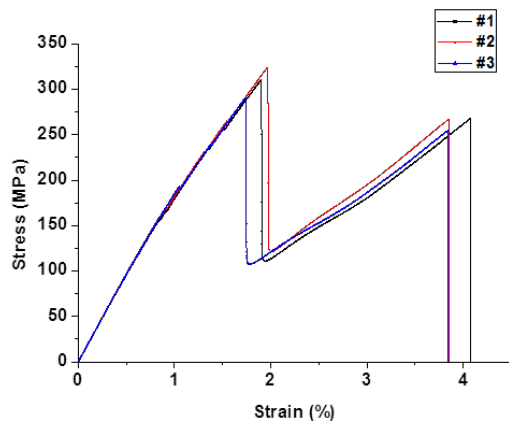


Fig. 6 Result of Type 4

Fig. 7 shows the result of the tensile test for Type 5, in which each 2ply of 8 ply EVA was uniformly laminated between CFRP 3K 8ply. The ultimate tensile strength at the first rupture was found to be 196.11 MPa, while the tensile strength at the second total rupture was found to be 103.29 MPa. The strain at the first Max. Stress was approximately 1.55%, while the second strain at total rupture was about 2.56 %. The tensile modulus of Type 5 was found to be 13.74 GPa. The tensile strength of Type 5 at the first rupture decreased by 75% when compared to that of Type 1. Meanwhile, 87% reduction in the tensile strength was observed at the second rupture. The strain reduction observed at the first rupture was about 39%, while 13% increment was observed at the second rupture. The elastic modulus decreased by about 65%. The second tensile strength of Type 5 decreased by 47% compared to the first tensile strength.

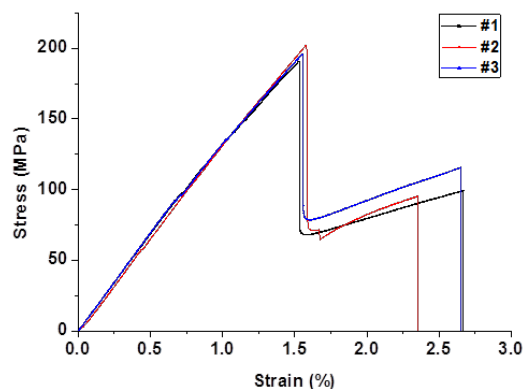


Fig. 7 Tensile Test Result of Type 5

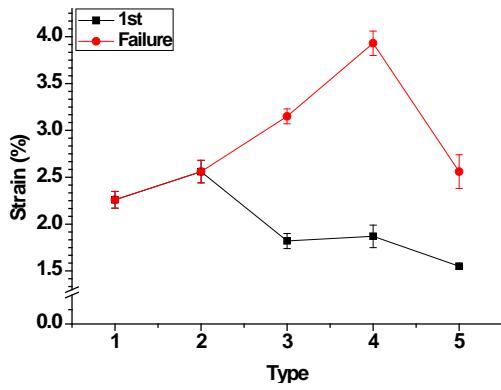
Type	Area mm ²	Max. Load kN	Tensile Stress MPa	Strain %
1	46.04	28.03	811.11	2.26
2	118.45	44.05	619.98	2.56
3	113.64	22.34	327.81	1.82
4	104.58	19.23	308.34	1.87
5	101.61	11.95	196.11	1.55

As the lamination ratios of CFRP and EVA in Type 1 and Type 2 were 10:0 and 9:1, respectively, the tensile test graphs showed similar trends, indicating the dominant role of CFRP in the materials. The tensile test graphs of the remaining 3 types showed two stages of rupture, unlike the stress-strain curve of the pure CFRP, indicating the mixed roles of CFRP and EVA. Although the modulus and the tensile strength decreased with increase in the number of EVA lamination, an increase in the elongation could be confirmed. Thus, they can be applied for components requiring low strength and high elongation.

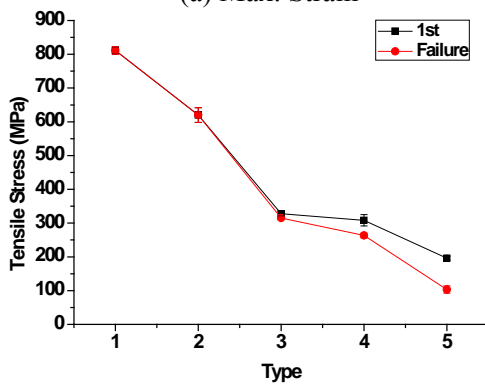
Fig. 8(a) shows the comparison of the strain the five types of specimen. The strain increased from Type 1 comprising the pure CFRP lamination to Type 4 consisting of CFRP and EVA with a lamination ratio of 7:3. On the other hand, although Type 5 has the highest EVA lamination ratio, the strain was found to decrease to the level of Type 2, which consists of CFRP and EVA with lamination ratio of 9:1. In the composite of CFRP and EVA, the latter was confirmed to have a significant effect on the strain. However, it was difficult to observe an increase in the strain when the lamination ratios of EVA and CFRP were higher than 7:3.

Fig. 8(b) shows a graph comparing the tensile strengths of the 5 Types. Type 1 with the pure CFRP lamination exhibited the highest results. When the EVA lamination ratio in the composite of CFRP and EVA was increased, the tensile strength was weakened. The CFRP has a greater effect on the tensile strength compared to the EVA. Thus, it might be difficult to expect beneficial effects from the EVA lamination in terms of the tensile strength.

Table 4 Tensile Test Results of Five Types



(a) Max. Strain



(b) Max. Stress

Fig. 8 Tensile Test Result of Five Types

Fig. 9 and Table 5 shows a graph comparing the chord modulus of elasticity and the modulus of toughness of the five lamination types. The modulus was found to decrease with the CFRP lamination ratio. It could be determined that the EVA lamination in the composite of CFRP and EVA did not have beneficial effects on the modulus. However, the Modulus of Toughness decreased from Type 1, and showed an increase at Type 4 which consists of CFRP and EVA with a lamination ratio of 7:3. In spite of the low tensile strength, Type 4 exhibited the highest elongation, indicating high fracture toughness.

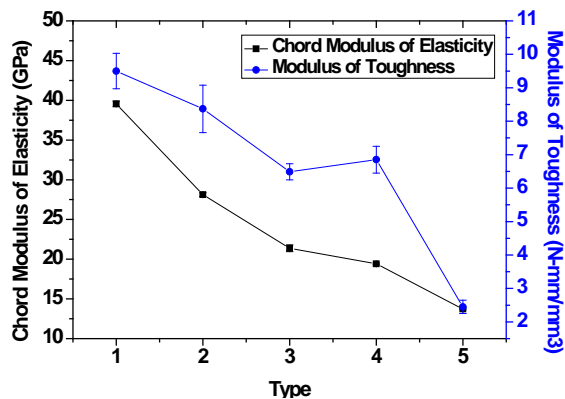
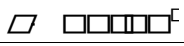


Fig. 9 Elasticity and Toughness Modulus Curve for Tensile Test

Table 5 Results of Modulus each Types

Type	Tensile Chord modulus	Modulus of Toughness
	GPa	
1	39.55	9.50
2	28.13	8.37
3	21.37	6.49
4	19.42	6.85
5	13.74	2.45

3.3 Results of Bending Test

Similar to the tensile strength, the bending test was performed 3 times on each of the five types of specimens to determine the bending strength, the strain and the modulus. The results are summarized in Fig. 10 - Fig. 14 and Table 6.

Fig. 10 shows the result of the bending test for Type 1 comprising 24ply of CFRP lamination. The average flexural strength was 888.11 MPa, while the Chord Modulus was found to be 47.70 GPa. In addition, the strain at the breaking point was 0.02 mm/mm.

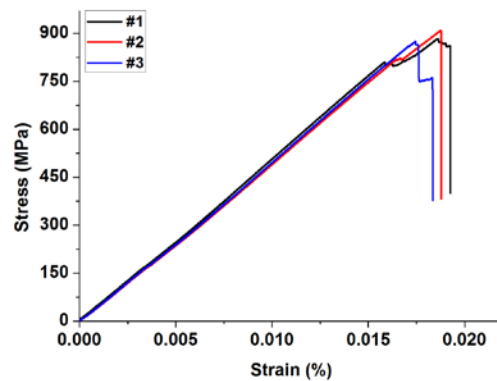


Fig. 10 Bending Test Result of Type 1

Fig. 11 shows the result of the bending test for Type 2 having CFRP and EVA lamination ratio of 9:1. The average flexural strength was 339.86 MPa, while the Chord Modulus was found to be 11.13 GPa. In this case, the strain at the breaking point was 0.04, showing double increment compared to that of Type 1. The strength was lowered to 38%, while the Chord Modulus was lowered to 23% when compared to that of Type 1.

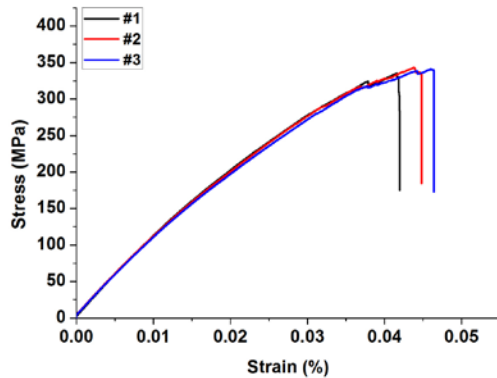


Fig. 11 Bending Test Result of Type 2

Fig. 12 shows the result of the bending test for Type 3 with CFRP and EVA lamination ratio of 8:2. The average flexural strength was 184.08 MPa, while the Chord Modulus was found to be 5.39 GPa. Here, the strain at the breaking point was confirmed to be higher than 0.05, but the exact point could not be observed. This was because the test was stopped at 5% according to the strain limitation of 5% specified in the bending test standard, ASTM D 790. So, the strength value at this point was specified as the flexural strength value. It showed double increment compared to that of Type 1. The strength was lowered to 21%, while the Chord Modulus was lowered to 11% when compared to that of Type 1.

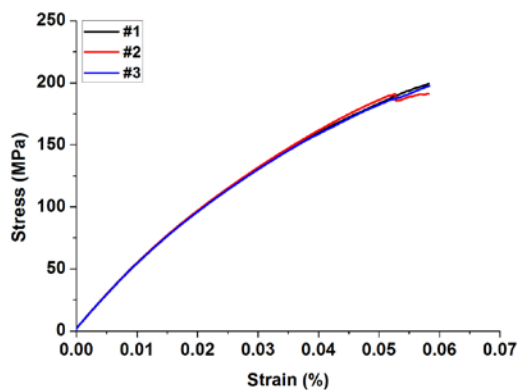


Fig. 12 Bending Test Result of Type 3

Fig. 13 shows the result of the bending test for Type 4 consisting of CFRP and EVA lamination ratio of 7:3. The average flexural strength was 141.60 MPa, while the Chord Modulus was found to be 3.62 GPa. Similar to Type 3, the strain at the breaking point was found to be higher than 5% due to the Strain Limit and the exact point could not be observed. The strain was two times higher compared to that of Type 1. The strength was lowered to 16%, while the

Chord Modulus was lowered to 8% when compared to that of Type 1.

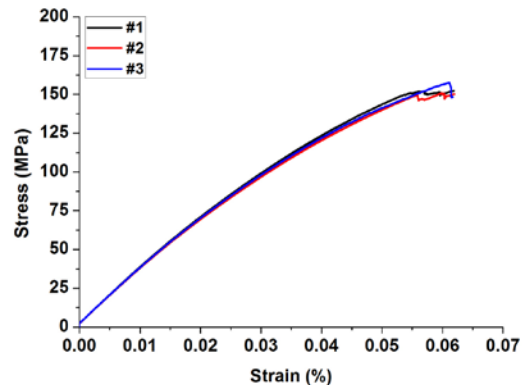


Fig. 13 Bending Test Result of Type 4

Fig. 14 shows the result of the bending test for Type 5 with CFRP and EVA lamination ratio of 6:4. The average flexural strength was 81.69 MPa, while the Chord Modulus was found to be 2.17 GPa. Similar to the cases of Type 3 and Type 4, the strain at the breaking point was found to be higher than 5% due to the Strain Limit and the exact point could not be observed. However, the strain was two times higher than that of Type 1. The strength was lowered to 9%, while the Chord Modulus was lowered to 5% compared to that of Type 1.

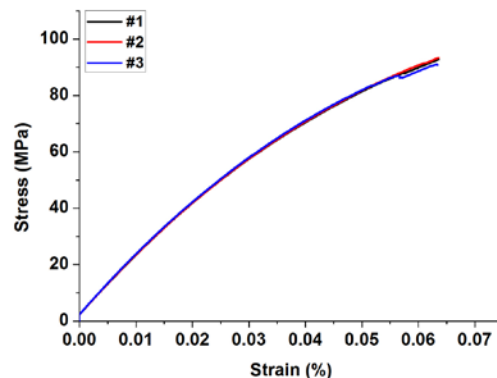


Fig. 14 Bending Test Result of Type 5

Table 6 Bending Test Results of Five Types

Type	Area (mm ²)	Max. Load (N)	Flexural Stress (MPa)	Chord Modulus of Flexure (GPa)	Tangent Modulus of Elasticity (GPa)
1	60.81	2248.57	888.11	47.70	47.31
2	59.07	834.83	339.86	11.13	11.13
3	56.22	458.97	196.00	5.39	4.68
4	53.11	340.10	131.02	3.62	3.63

5	51.44	198.30	81.69	2.17	2.17
---	-------	--------	-------	------	------

Fig. 15 shows the comparison of the flexural strength and the flexural modulus of elasticity for the five different specimens. The strength and the elastic modulus rapidly decreased with increase in the EVA lamination ratio. .

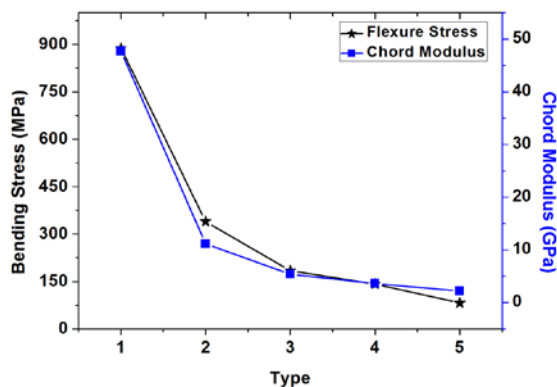


Fig. 15 Flexure stress and Modulus Curve for Bending Test

4 Conclusion

In this study, five types of hybrid composite materials with different CFRP/EVA blend ratios and lamination methods were prepared by applying the EVA polymer on the carbon fiber composite material in order to compensate the brittleness of CFRP. Tensile tests and 3-point bending tests were performed to determine the mechanical strength.

1. The interface between CFRP and EVA of each type was investigated. It was seen that CFRP and EVA were closely combined on the interface without any defect due to the excellent formability, kneadability, and adhesion of EVA.
2. Among the 5 Types, the highest tensile strength was observed for Type 1 which consisted of only CFRP lamination. Type 4 consisting of CFRP and EVA with lamination ratio of 7:3 exhibited the highest strain value. The numbers of the CFRP and the EVA laminations were proportional to the tensile strength and the strain value, respectively. Therefore, Type 4 may be used as a light weight material for applications requiring low tensile strength and high elongation.

3. When comparing the results of the Chord Modulus of Elasticity and the Modulus of Toughness for the 5 lamination types, it could be observed that the modulus value decreased with the CFRP lamination ratio. It could be confirmed that the EVA lamination in the composite of CFRP and EVA did not have beneficial effects on the Chord Modulus. However, the Modulus of Toughness decreased from Type 1, and showed an increase at Type 4 which consists of CFRP and EVA lamination ratio of 7:3. In spite of the low tensile strength, Type 4 exhibited the highest elongation, indicating high fracture toughness.
4. The comparison of the tensile strength of each specimen type confirmed that the highest tensile strength was exhibited by the specimen containing EVA and the tensile strength was higher when the dispersion level of EVA was lowered. When the EVA was laminated in trisection or quadrisection, the brittle CFRP material was divided by the EVA, thereby lowering the tensile strength. However, the rupture of specimen could be prevented in the first test, while it was observed in the second test. This phenomenon occurred when 2-3ply EVA was laminated in a row and the layers of CFRP and EVA had uniform thickness.
5. The specimen for the 3-point bending test was prepared using the number of layers and the lamination methods similar to those of the tensile test. From the test results, it was observed that the bending stress decreased with the CFRP ratio, while the maximum strain increased. In particular, the observation of the uniformly distributed specimen by the naked eye showed no fracture and delamination phenomena.
6. The results of the Tangent Modulus of Elasticity obtained by the 3-point bending test showed the highest value of 43.36 GPa for the specimen consisting of only 24ply CFRP. With increase in the ratio of EVA and the lamination distribution, the Tangent Modulus of Elasticity reduced and the elasticity was enhanced. In particular, the specimen prepared by laminating 8 ply of EVA in trisection within 8ply of CFRP had the lowest elastic modulus of 2.18 GPa.

Acknowledgements

“This research was supported by the National Foundation of Korea(NRF) grant funded by the korea government (MISP) (No.

2017R1A2B4009646), the National Research Foundation of Korea(NRF) funded by the Ministry of Education(No. 2016R1A6A03012069) and the New&Renewable Energy of the Korea Institute of Energy Technology Evaluation and Planning(KETEP) grant funded by the Korea government Ministry of Trade, Industry and Energy.(No. 20143010024330, SUCCESS project)”

References:

- [1] Kim T.H., *A Study on High-flexible Carbon Fiber Composite Material Applied with Macromolecular Polymer*. Master's degree dissertation, Jeonju University, Korea, 2016
- [2] Lee T.H., Kil S.C., Status of the recent applications of carbon fiber. *Korea Institute of Military Science and Technology*. 2012; vol.15, No.4:492-501
- [3] Yang G.S., et al. *Application handbook of carbon materials*. Dae young sa; 2008
- [4] Jo Y.J. A study on the penetration characteristics of carbon fiber reinforced composite laminate shells. Master's degree, University of Chosun, Korea
- [5] Go S.H., Kim H.G., Shin H.J., Lee M.S., Yoon H.G., Kwac L.K., The impact fracture behaviors of CFRP/EVA composites by drop-weight impact test. *Carbon letters*, Vol.21, pp.23-32, 2017
- [6] Yoon H.K., *A Study on Impact Resistance and Thermal Properties of Carbon Fiber Composite Material Applied with EVA*. Master's degree dissertation, Jeonju University, Korea, 2016
- [7] Go S.H., *Analysis of mechanical properties for laminating method in carbon fiber reinforced plastics*, Master's degree dissertation, Jeonju University, Korea, 2014
- [8] Shin H.J., *A Study on the mechanical and thermal characteristics analysis for thermal stress analysis of carbon composite*, Doctor's degree dissertation, Jeonju University, Korea, 2016
- [9] Shin H.J., *The strength evaluation and nondestructive testing of carbon fiber composites*, Master's degree dissertation, Jeonju University, Korea, 2013